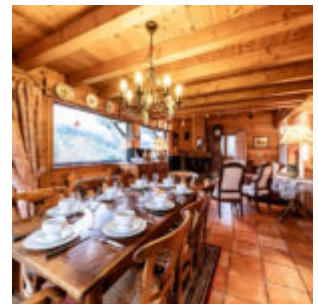
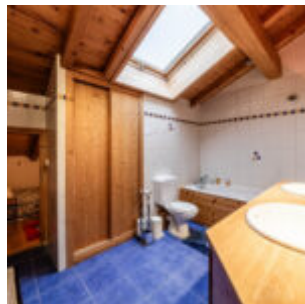
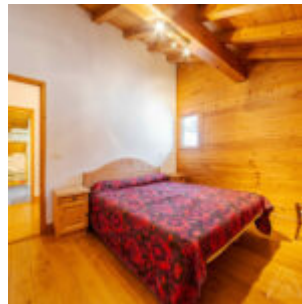
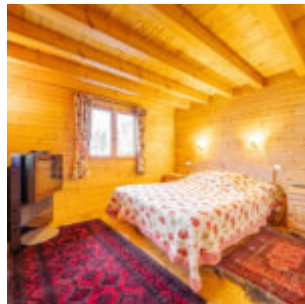
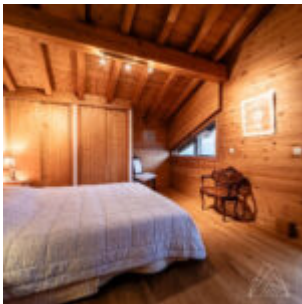
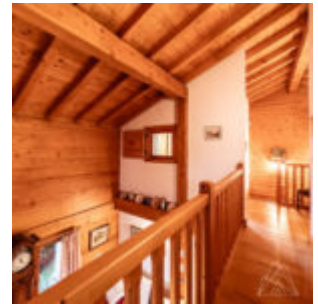
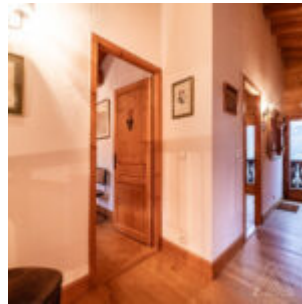
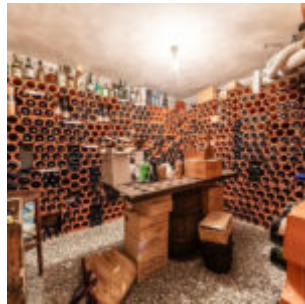
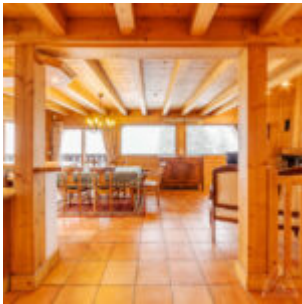
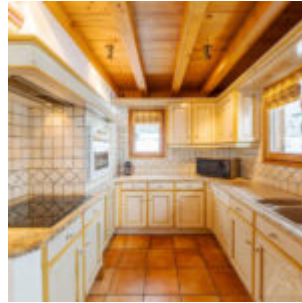
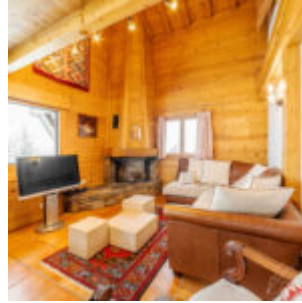


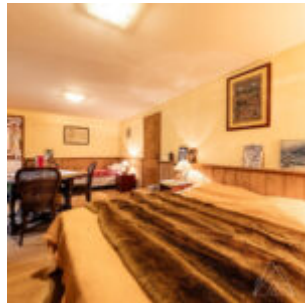
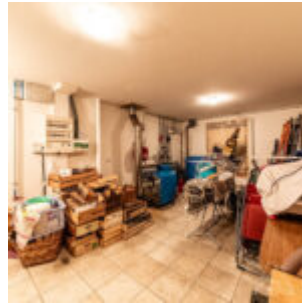
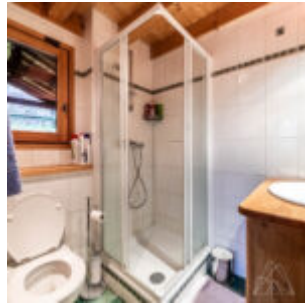
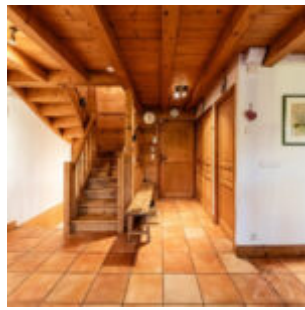


AGENCE
MY HOME
in the Alps

Chalet La Turche

Price : 1 790 000€





Rarely Available Family Chalet in Prime La Turche Location

An attractive, detached 4-double-bedroom family chalet, peacefully set at the end of a private cul-de-sac shared with just one other home. Offering panoramic mountain and village views, this property combines a sought-after location with space, charm, and scope to personalise. Built in 2002 by a respected local chalet constructor, it is just a short walk to the pistes, ski/bike shop, ski lifts, and ticket office at La Turche, as well as the village centre.

Rare opportunity in this location Only 75 minutes from Geneva Airport Easy stroll to pistes, ski lifts, and free ski bus Close to ski/bike hire and lift ticket office Spacious terrace and sunny balcony with far-reaching views Attractive landscaped garden Covered double carport plus additional parking Fireplace and well-presented interiors Strong rental appeal and excellent investment potential Built in 2002 with quality materials and craftsmanship, this chalet offers a total floor area of 177.62 m² (141.84 m² habitable) on a generous 1,276 m² plot. Features include a bac acier roof, oil-fired central heating, and fibre internet.

Layout:

Entrance Level

Welcoming hallway with fitted cupboards Guest cloakroom with WC Bright double bedroom with en-suite shower and WC Open-plan living and dining area with feature fireplace and direct access to a spacious terrace with panoramic views Fully fitted kitchen with granite worktops Upper Level Family bathroom with double basins and WC Double bedroom with balcony access Additional sleeping spaces under the eaves, ideal for children Mezzanine overlooking the lounge Lower Level Large laundry/boiler room Generous wine cellar Very large bedroom/sitting room with garden access and en-suite shower/WC Additional storage under the stairs Outside Beautifully landscaped garden with lawned areas Integral bike/garden store Double covered carport plus extra on-site parking This is a rare chance to own a well-built, versatile family chalet in one of

La Turche's most desirable positions—just steps from the slopes and amenities, yet tucked away in a peaceful setting.

Fees to be paid by the seller. Energy class E, Climate class E Estimated average amount of annual energy expenditure for standard use, based on the year's energy prices 2023: between 2310.00 and 3170.00 €. Information on the risks to which this property is exposed is available on the Geohazards website: georisques.gouv.fr.

Beadrooms :4

Bathrooms :3

Surface area (m2) :178.00

Land area (m2) :1276

Price :1 790 000€

PRESENTATION OF THE PROPERTY

Price :1 790 000

Charges mensuelles :0.00

Situation :Les Gets

Year of construction :2002

Type of heating :Chauffage au individuel fuel

PARTS

Number of main parts :5

Beadrooms :4

Bathrooms :3

MOVE

Covered parking spots :2

MY HOME IN THE ALPS



AGENCE
MY HOME
in the Alps

315 rue du bourg,
74110 Morzine
Tél. : +33 (0) 9 54 76 22 30